



Lever handle type



Rocker handle type



Direct-current high-voltage switch

CL-L10 Series

FEATURE

- Suitable switch of junction box for the photovoltaic system
- Two types of handle, Lever & Rocker
- Rocker type is low profile and has a suppression mechanism miss-operation
- Complies with "JWDS-0029" Japanese standard
- RoHS compliant

STANDARD SPECIFICATION

Operating Temp. range	-20~60°C No freezing or condensation
Storage Temp. range	-40~85°C Relative humidity 45~85%
Net weight	Approx.72.3g (Lever handle type) Approx.72.5g (Rocker handle type) *Without wiring screws and mounting screws

ELECTRIC CHARACTERISTICS

Number of poles	2 poles	
Rated operational voltage (Ue)	DC 300V	
Maximum open circuit voltage (Voc)	DC 450V	
Rated current (In)	10A	
Electric performance	Electrical Life	500 operations (100 operations at rated power+400 operations with no power)
	Dielectric strength	AC 2000V 60s
	Insulation resistance	100MΩ Minimum (DC500V)
	Temp. rise terminal	60K Maximum at 20°C

PART NUMBER OF DESIGNATION

CL-L10-230S6-R

Series name	CL-L10	Number of pole	2: 2 poles	Rating of voltage	30: 300V	Handle style	L: Lever handle type R: Rocker handle style	Terminal style	S6: Boxy style
-------------	--------	----------------	------------	-------------------	----------	--------------	--	----------------	----------------

LIST OF PART NUMBER

Handle style	Part number	Terminal style	Number of poles
Lever handle type	CL-L10-230S6-L	Boxy terminal	2
Rocker handle type	CL-L10-230S6-R		

MECHANICAL CHARACTERISTICS

Strength of terminal	Retention test	1 N/m, 60 N
	Twisting test	1 N/m, φ200-H250

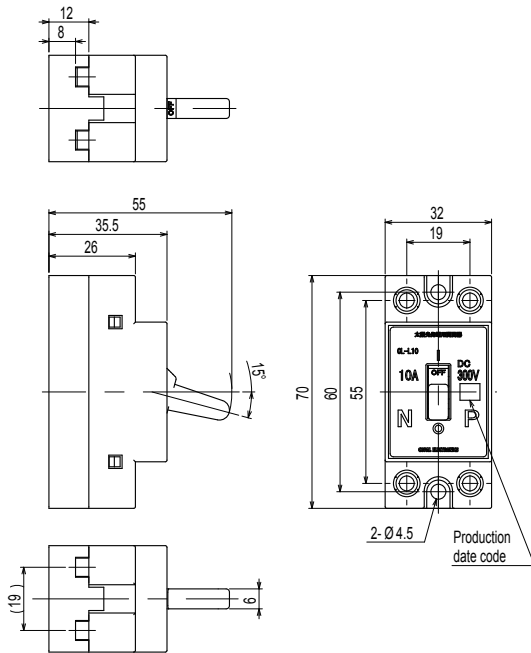
ENVIRONMENTAL SPECIFICATION

High temp. exposure	60°C 96h
Low temp. exposure	-20°C 96h
Thermal shock	-20(0.5h)~ 85°C(0.5h) 10cycles
Humidity	60°C Relative humidity 85%, 96h

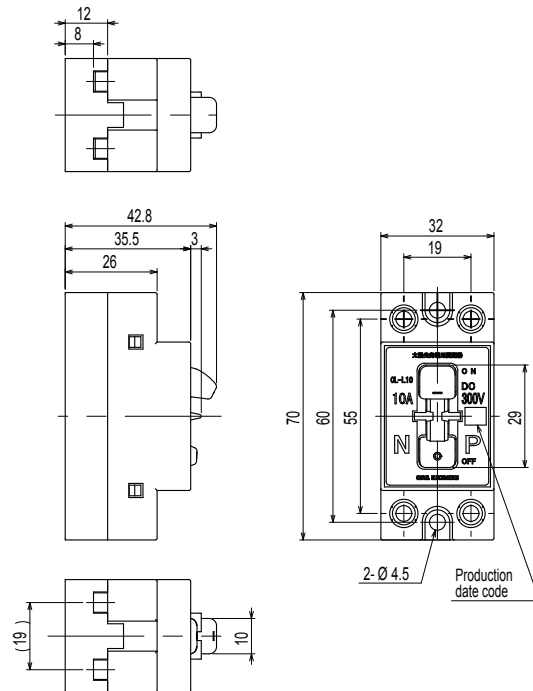
OUTLINE DIMENSIONS

Unless otherwise specified, tolerance: ± 1 (Unit: mm)

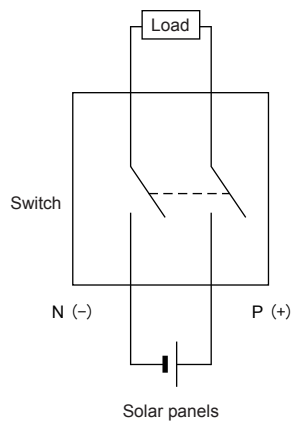
● CL-L10-230S6-L (Lever handle type)



● CL-L10-230S6-R (Rocker handle type)



WIRING DIAGRAM



* Note that there is a polarity of terminals.

NIDEC COPAL ELECTRONICS CORP.

7-5-25 Nishi-Shinjuku, Shinjuku-ku,
Tokyo 160-0023 JAPAN Phone:+81-3-3364-7055 Fax:+81-3-3364-7098

NIDEC COPAL ELECTRONICS, INC.

367 Van Ness Way, Suite 601
Torrance, CA 90501 U.S.A
Phone:+1-310-618-0225 Fax:+1-310-618-9984

NIDEC COPAL ELECTRONICS (SHANGHAI) CO.,LTD.

Unit A, 4/F, No.4 Bldg., No.253, Ai Du Rd., Wai Gao Qiao
Free Trade Zone, Shanghai, CHINA P.C.200131
Phone:+86-21-5046-3009 Fax:+86-21-5046-3115

NIDEC COPAL ELECTRONICS (TAIWAN) CO., LTD.

18F-1, No.57, Sec.2, Tun Hwa S.Rd., Taipei, TAIWAN
Phone:+886-2-27030577 Fax:+886-2-27010577

■ Specifications are subject to change without notice.

COPAL ELECTRONICS → All for dreams

www.nidec-copal-electronics.com

NIDEC COPAL ELECTRONICS GMBH

Mergenthalerallee 79-81
65760 Eschborn GERMANY
Phone:+49-6196-92775-0 Fax:+49-6196-92775-75

NIDEC COPAL ELECTRONICS KOREA CORP.

2F Jin-il Bldg., 52-7 Banpo-Dong, Seocho-Gu,
Seoul 137-040 KOREA
Phone:+82-2-3482-5861 Fax:+82-2-3482-5860

NIDEC COPAL ELECTRONICS SINGAPORE PTE. LTD.

180B Bencoolen Street #07-05 The Bencoolen Singapore 189648
Phone:+65-6535-0056 Fax:+65-6535-0087