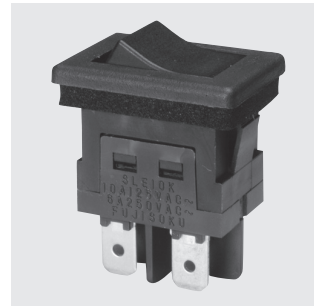


SLE10K

Panel Seal



Miniature Power Rocker Switches

UL CSA VDE

RoHS Compliant

Features

1. Waterproof structure

The switches can be used in a place in wetting risk due to the internally sealed structure.
The panel sealing performance is equivalent to the IP64 rating.

2. Snap-in panel mounting

The switch can be fixed on the panel just by inserting it to the panel cutout from the front side.

3. Soldering and tab terminals

The switch is structured so that the use of the TAB receptacle (#187) or soldering of lead wires can be chosen.

4. UL, CSA and VDE approved products.

Specifications

Rating	Load	Inductive load		Resistive load
	Inrush current (p.f.=0.6)	125VAC	250VAC	
	Break current (p.f.=0.9)	60A	36A	10A 125VAC 6A 250VAC (p.f.=1.0)
	Min. rating	10A	6A	
Initial contact resistance		20mΩ max.		(1A 2~4VDC)
Dielectric strength		1,500VAC 1 minute		
Insulation resistance		100MΩ min.		(500VDC)
Electrical life(cycles)		10,000 cycles		20,000 cycles
Operating force		3.92~12.7N		
Operating temperature range		-25~+85°C		
Storage temperature range		-40~+85°C		

Part Numbering

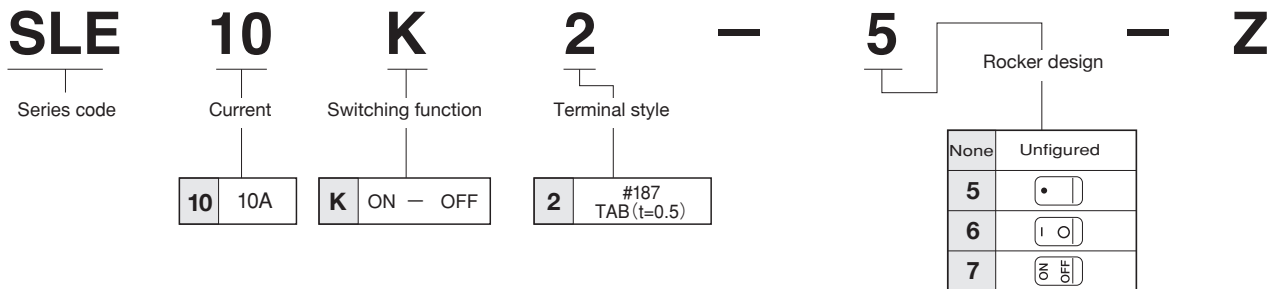


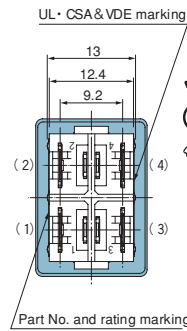
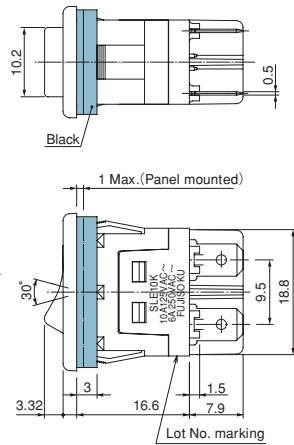
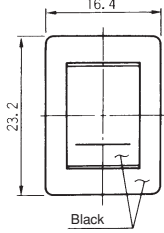
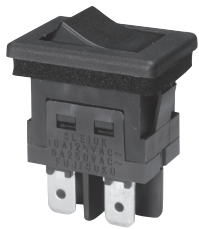
Table of Part Numbers

Poles	Frame color and rocker color	Switching function	Terminal style	Part No. and rating marking side			
2-pole	Black	ON-OFF	タブ端子/TAB	☆SLE10K2-Z	SLE10K2-5-Z	SLE10K2-6-Z	SLE10K2-7-Z

●For made-to-order products, we accept orders for indication of letters, codes, etc., on the top surface of the rocker.

SLE10K

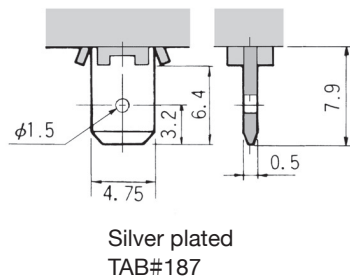
SLE10K2-Z DPST TAB#187 Terminal



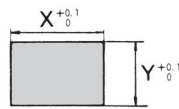
Switching function	Viewed from part No. & rating marking side	
Part No.		
SLE10K2-Z	ON	OFF
SLE10K2-5-Z		
SLE10K2-6-Z		
SLE10K2-7-Z		
Connecting terminals	1-2 3-4	-

Terminal numbers are shown on the bottom of the switch.

Terminal Style

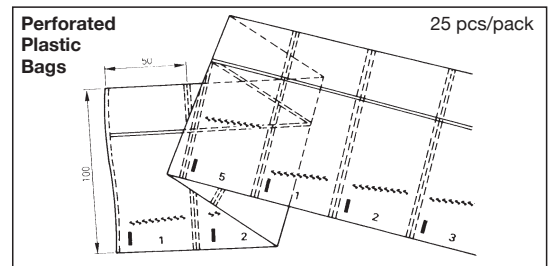


Panel Cut-Out Dimensions



Panel thickness	X	Y
0.75~1.25	19.2	12.9
1.25~3.5	19.4	12.9

Packaging Specification



Handling Precautions

The waterproofing performance of **SLE10K** is equivalent to the IP64 rating, but the following precautions must be strictly observed:

- Waterproof performance (Equivalent to IP64 rating)
 - Although the switch is waterproof-structured, do not use it under the environment where it is always exposed to water pressure (jet flow and under water).
 - Avoid the use in places where dust accumulates. The waterproof performance and operability may be deteriorated.
- Panel mounting
 - When the switch is used in a place where it may be exposed to water splash, mount the switch at a tilt of at least 35 degrees from the horizontal surface. (See Fig. 1.)
 - Mount the switch on the panel so that the thickness of packing is 1 mm or below. (See Fig. 2.)

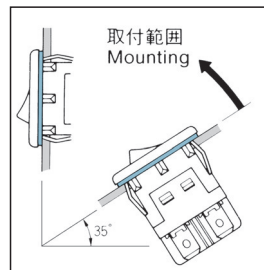


Fig.1.

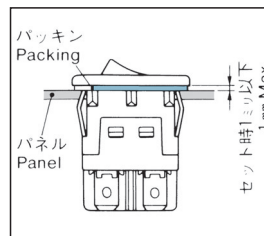


Fig.2.

Do not reuse the switch that is once mounted on a panel. Neglecting this caution may deteriorate the waterproofing performance.

3. Soldering Specifications

- Manual Soldering

Device: Soldering iron
380°C, Max.; 3 seconds, Max.